

We had to cover DO-160 for a PBX product developed by us (for a customer).  
DO-160 is a test procedures for airborne equipments.

The major tests performed were:

- Conducted RF Emissions
- Radiated RF Emission
- Vibration & Shock Testing
- Temperature Testing

Bellow some pictures from the lab:



Our unit in EMI/EMC Chamber



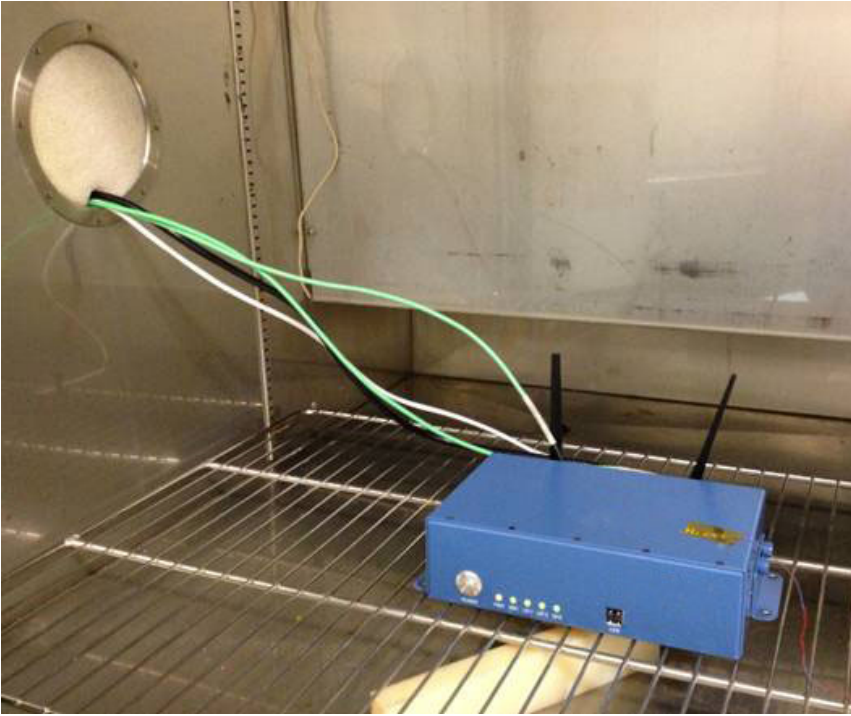
Current probe attached to the unit

Radiated RF Emission sensed by Double Ridged Waveguide Horn Ante



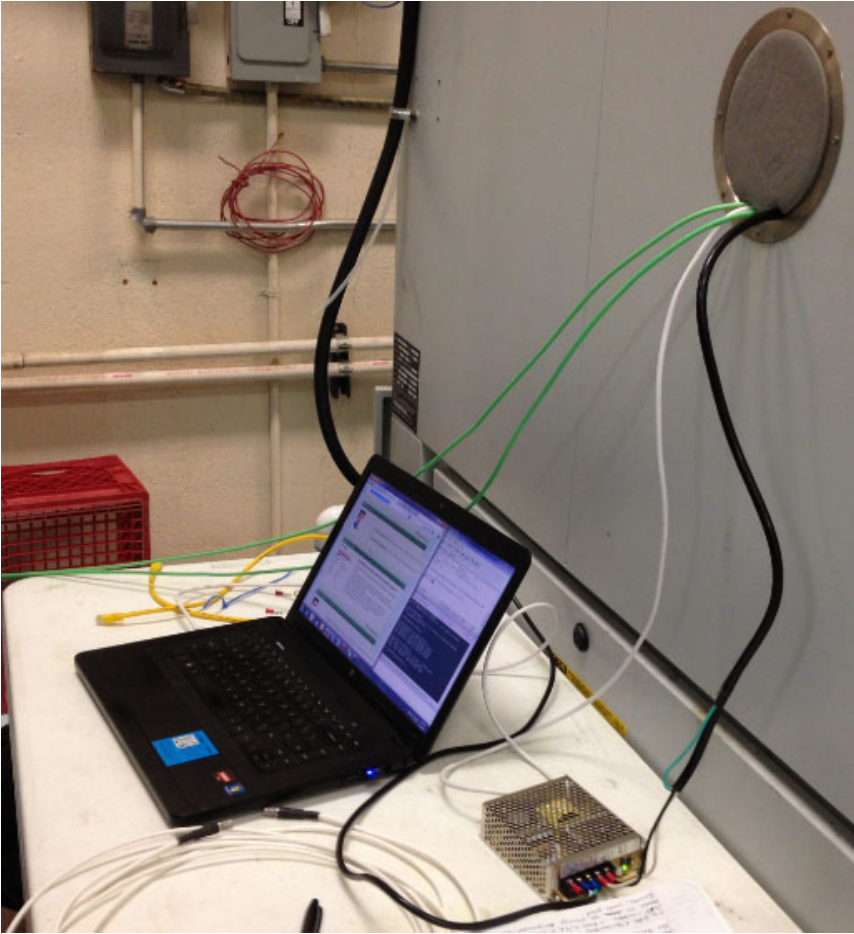


Radiated RF Emission sensed by Biconical Antenna  
Our unit in the chamber

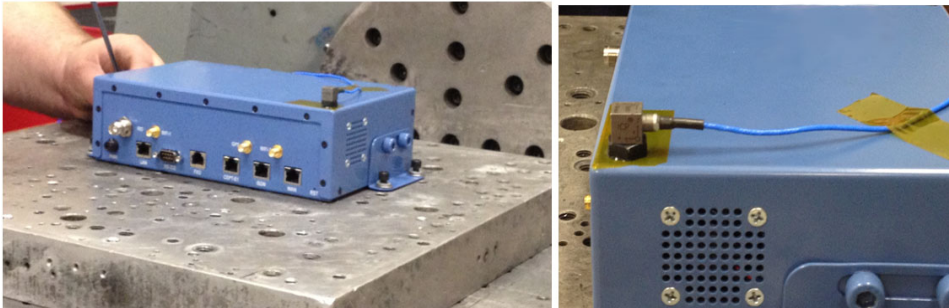




Thermotron Temperature Chamber



High & Low Temperature Testing have been performed



Vibration & Shock testing has also been successfully completed.